



## Supplementary accessories

### Corner joint for external venetian blinds

Basic external venetian blinds in corner positions can now also be designed without obstructing the guidance on the corner thanks to corner joints - for an unobstructed view of the modern all-glass corner!

#### Unimpeded view

Raised external venetian blinds no longer restrict the view of the stylish all-glass corners.

#### Discreet appearance

Slender corner joints on the slats – no disruptive guide on the corner.

#### Can be used for:

- E 80 A6 S
- E 80 AF A6
- E 80 A6 Z
- E 90/93 A6



#### Construction limit values

Maximum order height 4000 mm

#### Product characteristics

- Can be used in different ways with almost all slat geometries

## Notes

### To be considered during planning:

- Due to wind turbulence at building corners, as well as increased wind pressure for taller buildings, **use is permitted only up to 10 m above ground.**
- The wind speed limits **apply only when the facade/windows are closed.** When the windows or sash frames are open, the external venetian blind must be moved to its upper position.

### Determining the permissible wind speed limits:

- For beaded slats and all dim-out slats, the wind speed limits for slat 80 S must be applied. The Beaufort number in the table must then be reduced by one more Beaufort number.
- For flat slats, the separate table for flat slats must be used and the value then likewise reduced by one Beaufort number.

### Permissible bracket projection:

- External venetian blinds with beaded slats and flat slats: max. 200 mm
- External venetian blinds with dim-out slats: max. 300 mm

**Group units:** Group units are not possible

### Cable guidance:

- Cable-guided external venetian blinds are not possible
- Additional tension cables for external venetian blinds with rail guidance are possible

**Movement behaviour:** Tilt and move both external venetian blinds on the corner position at the same time.

+ see "External venetian blind wind speed limits", Page 532

## Construction limit values

The construction limit values for the respective basic type always apply.

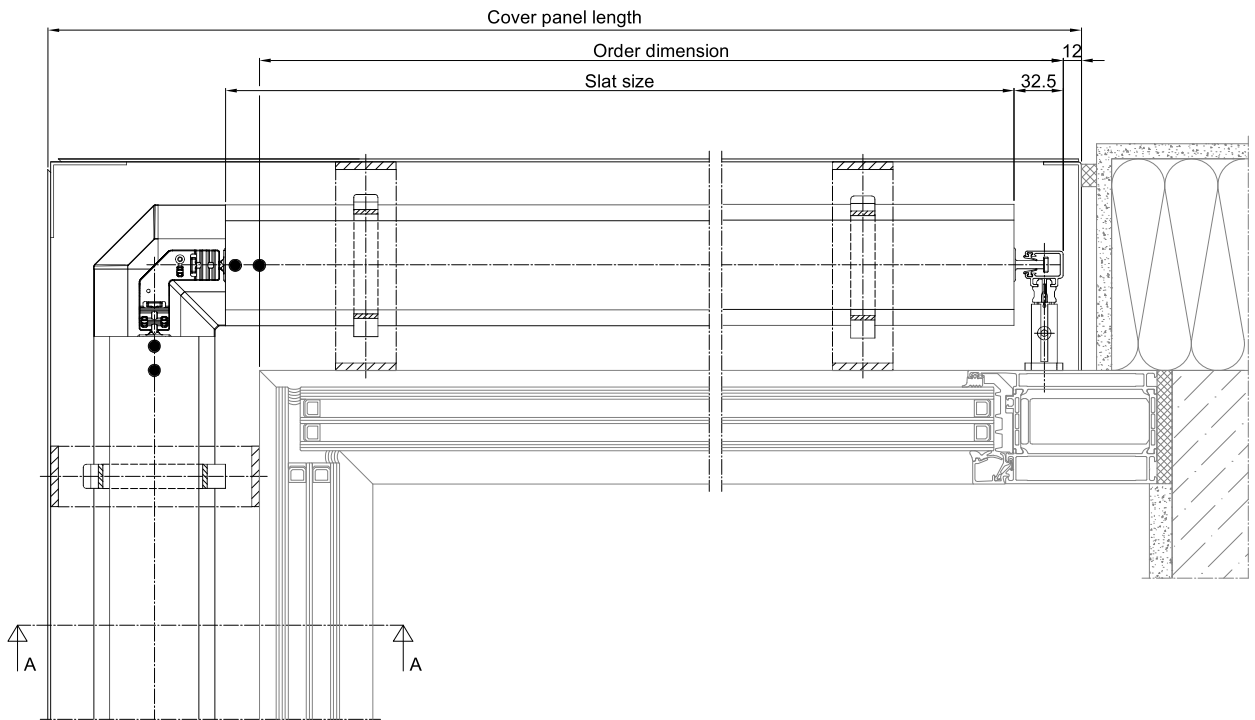
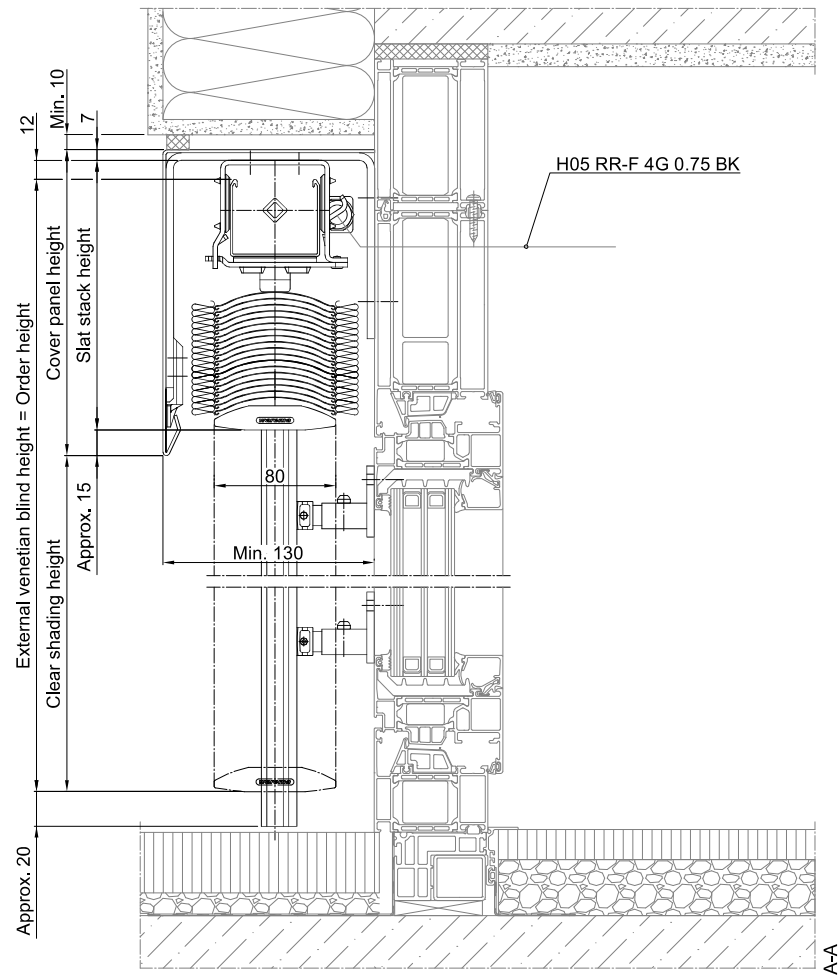
### Maximum width per side (slat length):

- max. 3000 mm for beaded slats
- max. 2400 mm for flat slats
- max. 3000 mm for dim-out slats

# Dimension determination

Basic external venetian blind with corner joint for guide pins, rail guidance, beaded slats, angular cover panel

PDF DWG



The greyed-out sections of the illustration represent interfaces to general trades which, on the whole, must be planned and performed independently and on-site. WAREMA does not provide services for the greyed-out interfaces and assumes no liability for them.

71771V3