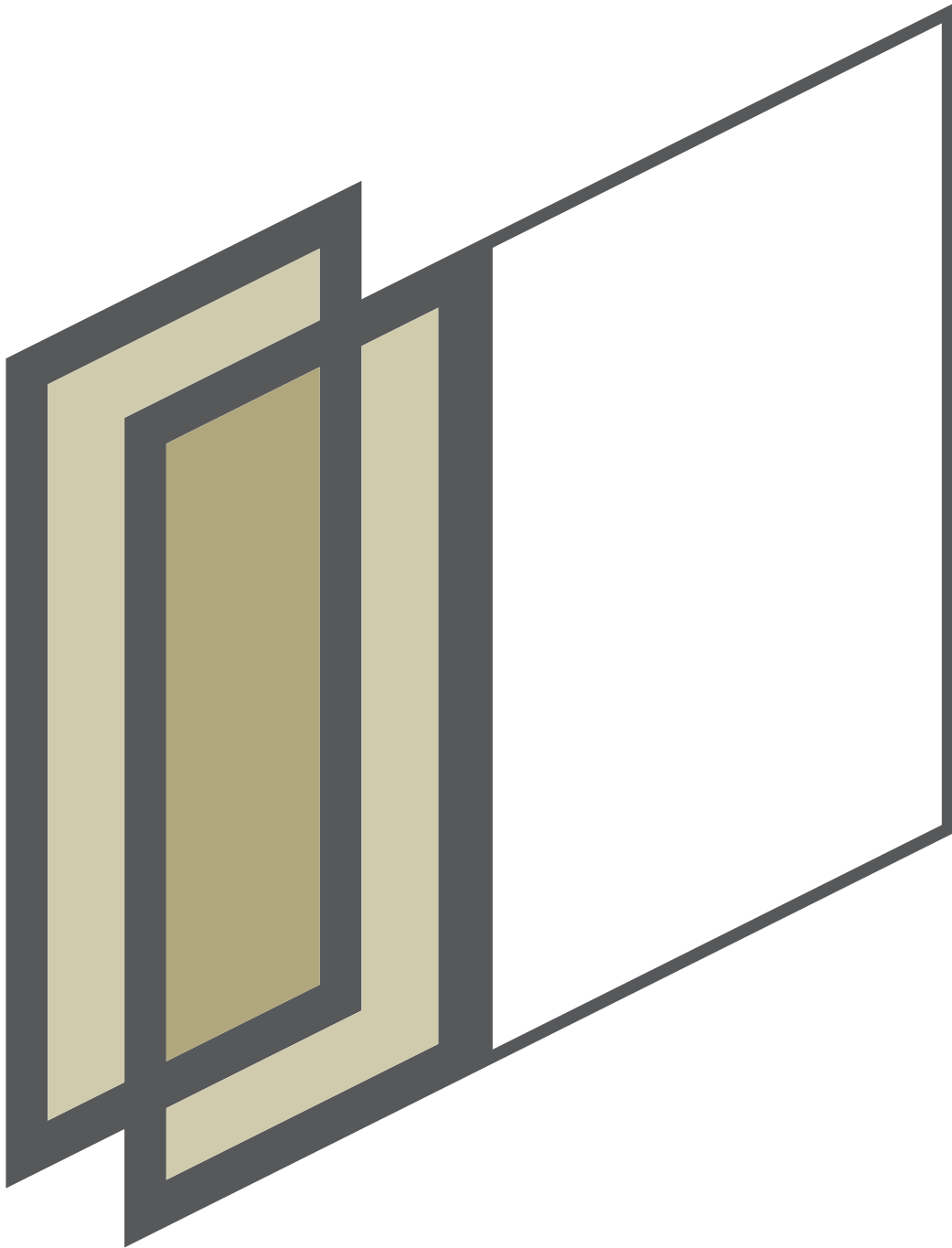


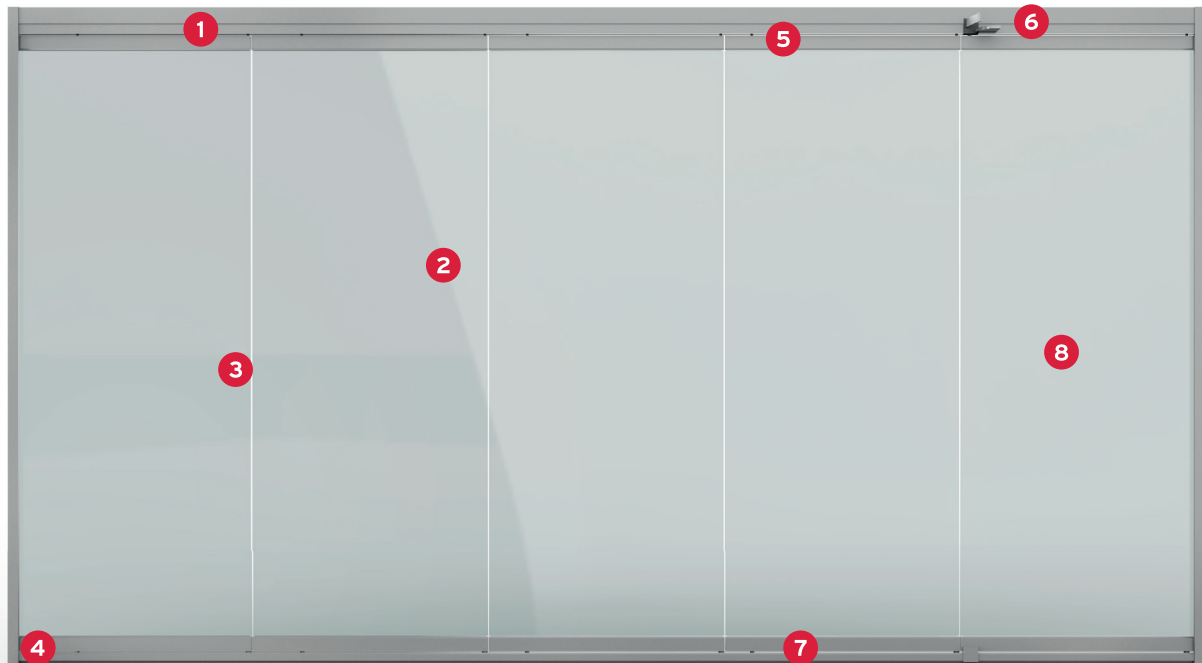
SL 25

Slide-and-turn system



PRODUCT DATA SHEET

SLIDE-AND-TURN SYSTEM SL 25



1

LIGHT

Dual horizontal running mechanism with precision bearings guarantees extremely smooth running for the panels, even around corners.



2

TRANSPARENCY

The all-glass slide-and-turn system is resistant to driving rain and offers full transparency together with sound insulation.



3

FUNCTIONAL RELIABILITY

The all-glass, stainless-steel-look door handle offers both convenient operation and a lock for burglar resistance (optional).

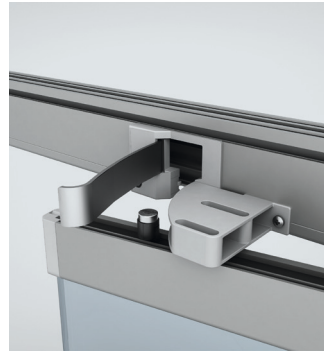




4

WIDTH ADJUSTMENT

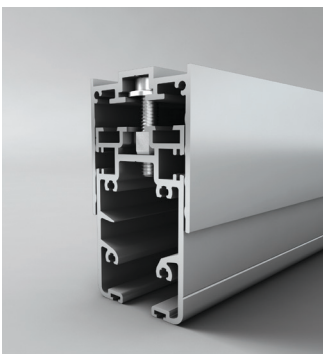
Once installed, the width of the side frame can be adjusted by up to 30 mm - this is important in order to compensate for dimensional tolerances.



6

VENTILATION

The lockable, two-stage trickle ventilation allows for a controlled air flow (optional).



5

HEIGHT ADJUSTMENT

The height adjustment profile can compensate for dimensional tolerances of up to 35 mm, and allows the height of the panels to be adjusted even after installation.



7

ACCESSIBILITY

The flush floor track allows for accessible living on patios and balconies. This system uses a bolt-and-chamber lock system.



8

CLEANING








The outer panes of glass are easy to care for from inside the room.

SLIDE-AND-TURN SYSTEM

SL 25

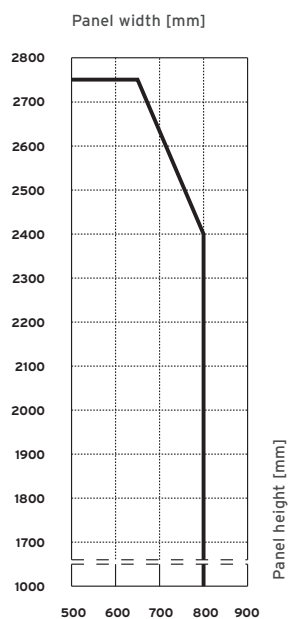
Features

European Technical Approval ETA-12/0262

	Resistance to wind load	-
	Water tightness	-
	Air permeability	-
	Resistance to repeated opening and closing	-
	Burglar resistance	-
	Sound reduction index	R'w up to 22 dB
	Thermal transmittance	Non-insulated

Note: Specifications vary depending on version and glass

Panel sizes



Note:

- Dimensions include frame
- Max. panel weight: 35 kg
- Not incl. wind and impact loads

System features

PROFILE SYSTEM

- Non-insulated, all-glass slide-and-turn system
- Linear glass pane fixed in aluminium profiles at top and bottom
- Panels suspended from top horizontal profiles and guided along bottom horizontal profiles
- Top running track available with height adjustment profile. Height adjustment profile with fixing bracket available as alternative
- Choice of horizontal bottom guide profiles: guide rail with or without fixing bracket, low-profile floor track
- Adjustable vertical frame (+ 15mm on each side)
- Grey, weather-resistant polyamide end caps on horizontal panel profile
- Sliding panel can be pushed to the left and/or right towards the opening position and swings inwards or outwards

SIGHT LINES

· Frame	2 - 68 mm
· Panel	0 mm
· Panel joint	0 mm
· Overall depth of running track and guide rail	45 - 53 mm
· Overall panel depth	27 mm

GLAZING

- Glass thicknesses of 6 and 8 mm - heat-soaked, toughened safety glass
- Panes polished on all edges

FITTINGS

- Fittings partly concealed in profiles
- Range of locking options for swing panels
- Magnetic door stay for swing panel
- Slim-line panel catches
- Safeguard at second panel exit to prevent incorrect operation

RUNNING MECHANISM

- Top running mechanism with ball bearings
- Fibreglass-reinforced polyamide bearing surfaces for quiet running
- Segmented options possible

SEALING AND VENTILATION

- Defined 3 mm vent when panels are closed ensures permanent ventilation and resistance to driving rain
- Lockable two-stage trickle ventilation on swing panel allows for controlled air flow
- Horizontal double brush seal at top and bottom

ENVIRONMENT

- Certified disposal in accordance with DIN EN ISO14001:2009
- Sustainable manufacturing
- Internal production control