



GLASSLINE

**Stock program with
64 system sizes and
over 1,000 glass panes**

CANOPY

All-glass canopy system



Optical lightness for every architectural style

A perfectly finished, filigree design profile in combination with large glass surfaces without interfering bracing.

CANOPY *cloud* fulfills the requirements for maximum transparency of architects, homeowners and craftsmen.



Online 3D configuration tool

Unique!

You can now configure **CANOPY** cloud online for a fast and precise request.

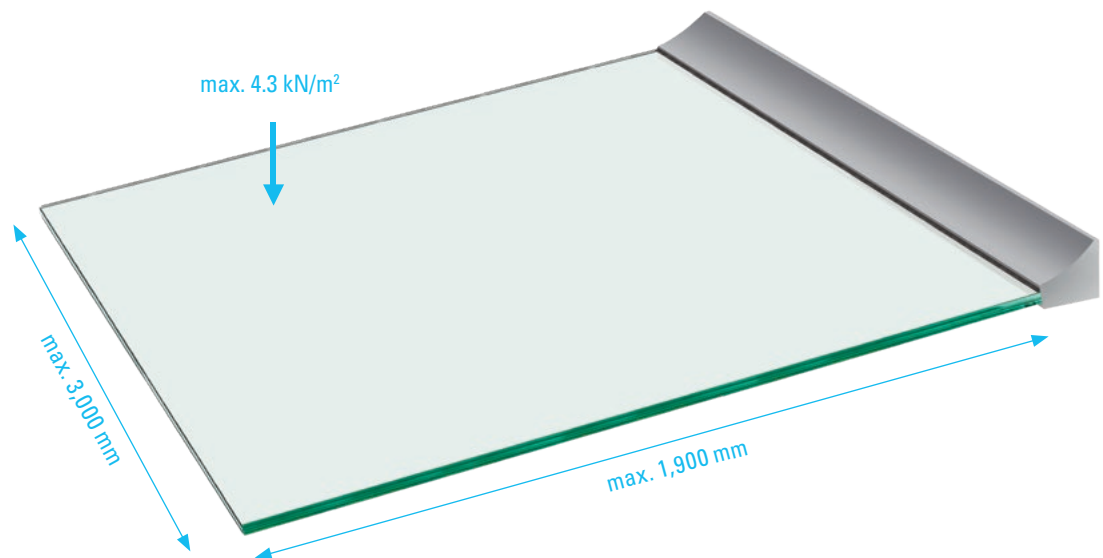
- Simple, intuitive usability
- Real-time 3D visualisation of your configured **CANOPY** cloud canopy



www.glassline.de/canopy-configuration-tool

The advantages

- Projection up to **1,900 mm**
- Glass width up to **3,000 mm**



- **All tests included:**
 - ✓ With European Technical Assessment (ETA)
 - ✓ With General Building Inspectorate Approval (AbZ)
 - ✓ With statics calculations



- Only linearly mounted on one side
- For snow loads up to **4.3 kN/m²**
(corresponding to a fresh snow depth of approx. 4.3 m)
- The simplest installation principle without drilling the glass
- LED illumination possible
- **New!** Glass stock program with **64 pane sizes**

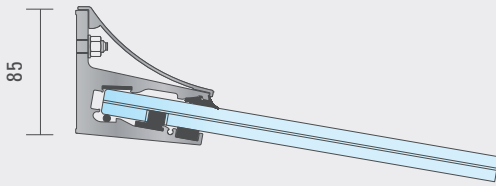
**GLASS STOCK
PROGRAM**

- **New!** Online configuration tool for fast requests and orders



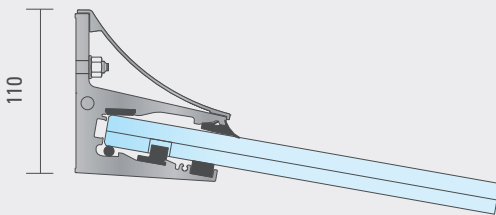
**ONLINE
CONFIGURATION TOOL**

System overview



System 1,100

- Glass thickness: **16 mm**
- Overhang: max. **1,100 mm**
- Profile type: **1**
- Profile length: max. 6,000 mm
- Glass length: 600 - 3,000 mm
- Roof pitch: **10°**

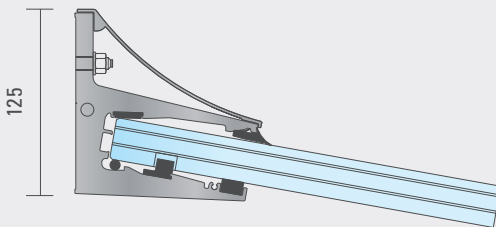


System 1,300

- Glass thickness: **20 mm**
- Overhang: max. **1,300 mm**
- Profile type: **3**
- Profile length: max. 6,000 mm
- Glass length: 600 - 3,000 mm
- Roof pitch: **10°**

System 1,500

- Glass thickness: **24 mm**
- Overhang: max. **1,500 mm**
- Profile type: **3**
- Profile length: max. 6,000 mm
- Glass length: 600 - 3,000 mm
- Roof pitch: **10°**



System 1,700 individual

- Glass thickness: **26 mm**
- Overhang: bis **1,700 mm**
- Profile type: **5**
- Profile length: max. 6,000 mm
- Glass length: 600 - 3,000 mm
- Roof pitch: **10°**

System 1,900 individual

- Glass thickness: **30 mm**
- Overhang: bis **1,900 mm**
- Profile type: **5**
- Profile length: max. 6,000 mm
- Glass length: 600 - 3,000 mm
- Roof pitch: **10°**

▪ Surface

■ "Natural" untreated

■ Stainless steel look (E6EV1)

■ RAL or special colour powder-coated or anodised

Stock program

Overhang in mm	Glass widths in mm									
	1,200	1,400	1,600	1,800	2,000	2,200	2,400	2,600	2,800	3,000
System 800	✓	✓	✓	✓	✓	✓	✓	✓	✓	✓
System 900	✓	✓	✓	✓	✓	✓	✓	✓	✓	✓
System 1,000	✓	✓	✓	✓	✓	✓	✓	✓	✓	✓
System 1,100	✓	✓	✓	✓	✓	✓	✓	✓	✓	✓

	1,200	1,400	1,600	1,800	2,000	2,200	2,400	2,600	2,800	3,000
System 1,200			✓	✓	✓	✓	✓	✓	✓	✓
System 1,300			✓	✓	✓	✓	✓	✓	✓	✓

	1,200	1,400	1,600	1,800	2,000	2,200	2,400	2,600	2,800	3,000
System 1,500			✓	✓	✓	✓	✓	✓	✓	✓

All intermediate formats and individual sizes for all systems are available.

**Stock program with
64 system sizes and
over 1,000 glass panes**

▪ Surface stock program

"Natural" untreated
 Stainless steel look (E6EV1)
 Anthracite RAL 7016
 White RAL 9016
 Iron mica gray DB 703

GLASSLINE

CANOPY *cloud*

Completely self-supporting and flexible



Our trade fair exhibit, a 3.00 m x 1.90 m large **CANOPY cloud** supports a 900 kg Mini.





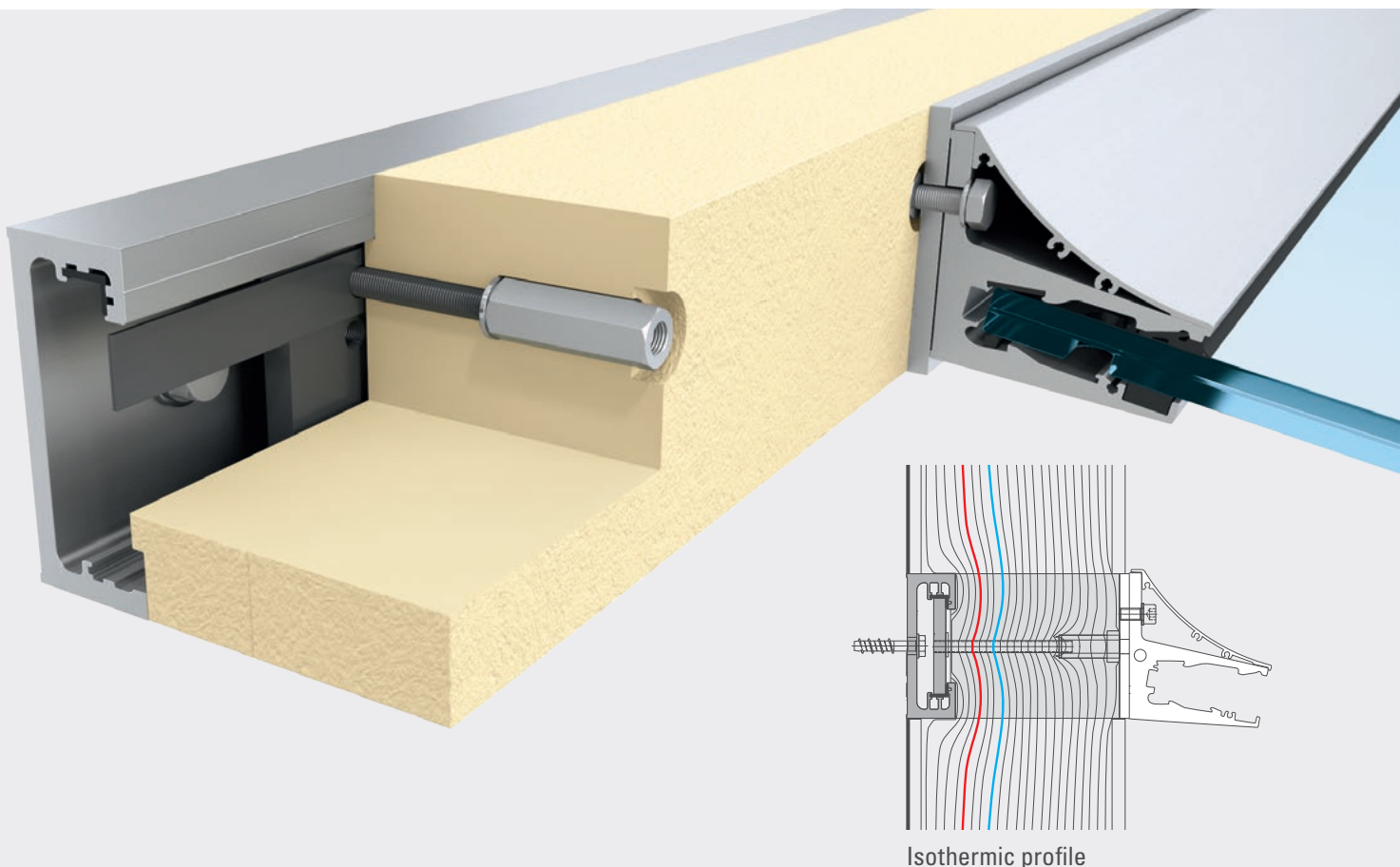


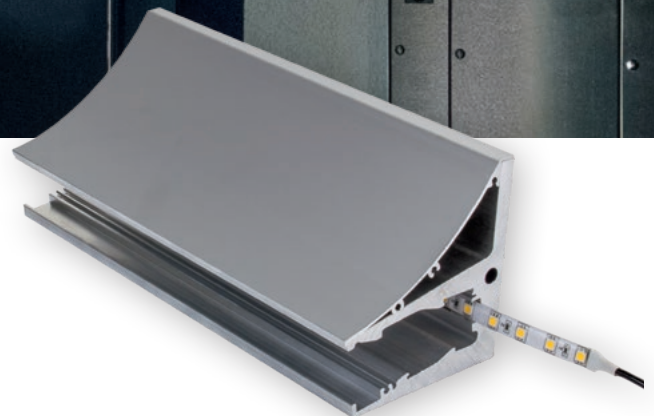
Safe attachment of **CANOPY** *cloud* to thermally insulated façades **FIX'N SLIDE**

- Reduction of heat bridges
- secure mounting of add-on elements

The proven **FIX'N SLIDE** from GLASSLINE ensures securely fastened add-on elements on heat-insulated walls and facades. Thermal bridges are reduced. With few components and different insulation element sizes, any insulation thickness can easily be thermally and statically bridged.

Whether new or existing construction – **FIX'N SLIDE** acts as a rail for linear installation of every on-site situation.





Lighting LED strip

- Printed circuit board: flexible printed circuit with adhesive tape
- Voltage: 24V DC
- Power: 14.4 W/m
- LED type: SMD5050
- Number of LEDs: 60 pces./m
- Luminous flux/LED: 18-20 lm
- Separability: every LEDs or every 10 cm
- Colour temperature: 6000 K +/- 100 K
- Dimensions: 10 x 2 mm (W x H)
- Degree of protection: IP65
- Cable length: 1 m
- Packing unit: 2.5 m roll or 6.0 m roll
- Energy efficiency class: A+
- Certificates: CE, RoHs

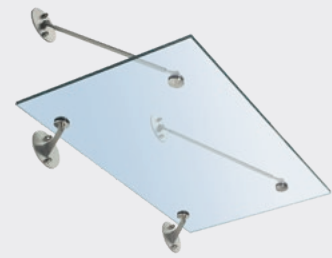


NOTE: The LED strip transformer has a 1 m lead.
This enables transformer connection indoors. The transformer may only be deployed in a dry environment!

System overview

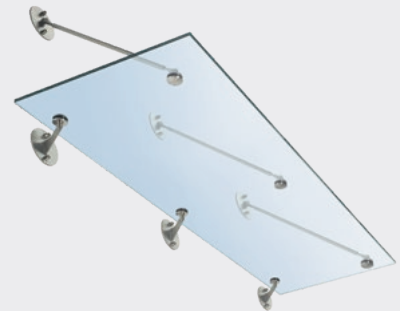
System 2-Clamping fixture – 1,500

- Glass thickness: LSG 16 mm*
- Glass widths (W x D): **max. 2,000 x 1,200 mm by 0.80 kN/m²**
min. 700 x 700 mm by 2.30 kN/m²
- Glass thickness: LSG 20 mm*
- Glass widths (W x D): **max. 2,300 x 1,500 mm bei 1.30 kN/m²**
min. 700 x 700 mm by 3.75 kN/m²
- Surfaces: Stainless Steel suspensions 1.4404 Point fixing Stainless Steel 1.4404



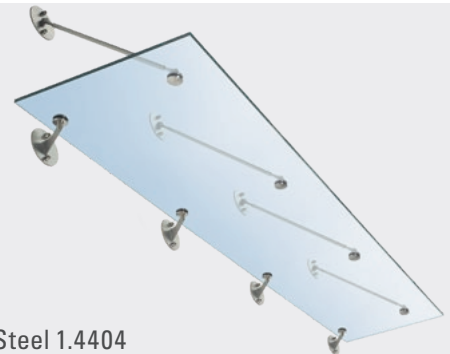
System 3-Clamping fixture – 1,680

- Glass thickness: LSG 16 mm*
- Glass widths (W x D): **max. 2,800 x 1,400 mm by 0.90 kN/m²**
min. 1,200 x 700 mm by 1.25 kN/m²
- Glass thickness: LSG 20 mm*
- Glass widths (W x D): **max. 3,200 x 1,680 mm by 0.85 kN/m²**
min. 1,200 x 700 mm by 2.05 kN/m²
- Surfaces: Stainless Steel suspensions 1.4404 Point fixing Stainless Steel 1.4404



System 4-Clamping fixture – 1,680 individual

- Glass thickness: LSG 16 mm*
- Glass widths (W x D): **max. 3,900 x 1,400 mm by 0.90 kN/m²**
min. 1,700 x 700 mm bei 1.25 kN/m²
- Glass thickness: LSG 20 mm*
- Glass widths (W x D): **max. 4,500 x 1,680 mm by 0.85 kN/m²**
min. 1,700 x 700 mm by 2.05 kN/m²
- Surfaces: Stainless Steel suspensions 1.4404 Point fixing Stainless Steel 1.4404



Wall mount console

A

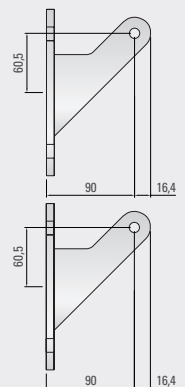
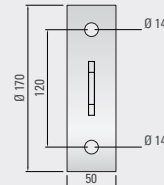
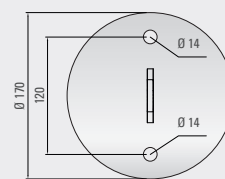


Type

top

bottom

B



Stock program

System 2-Clamping fixture

Overhang in mm	Glass widths in mm			
	1,600	1,800	2,000	2,300
1,000	✓ LSG 16		✓ LSG 16	
1,200		✓ LSG 16	✓ LSG 16	✓ LSG 20

System 3-Clamping fixture

Overhang in mm	Glass widths in mm	
	2,600	2,800
1,200	✓ LSG 16	✓ LSG 16
1,400		✓ LSG 16





GLASSLINE

GLASSLINE GmbH

Industriestraße 7-10

74740 Adelsheim, Germany

Telephone +49 (0) 6291 6259-0

Fax +49 (0) 6291 6259-11

info@glassline.de

www.glassline.de

The system vendor for frameless glass architecture

As a leading supplier, GLASSLINE develops, manufactures and sells high-quality system solutions in the fields of point-to-point fixing systems, all-glass railing systems, frameless canopy constructions and systems with thermal separation for secure attachment of add-on elements to building envelopes.

